

LAVWMA

Prepared by



Dublin San Ramon
Services District

Water, wastewater, recycled water

QUARTERLY REPORT OF OPERATIONS

FY 2025-2026, 3rd Quarter



**Quarterly Report of Operations
LAVWMA Pumping and Conveyance System**

Table of Contents

Executive Summary..... 2

Current Quarter Metrics 3

Operations..... 5

Maintenance 5

 Electrical..... 5

 Instrumentation & Controls 5

 Mechanical..... 5

 Operations..... 5

 Laboratory..... 6

Electrical Usage, Efficiency, & Cost..... 6

Pump Run Time 8

Basin Levels 9

Export Flow 10

Expenditures & Budget Utilization: Labor & O&M..... 11

Expenditures: Livermore Sole Use Facilities..... 12

Detailed YTD O&M Budget Comparison to Actual Expenses 13

EBDA Monthly Reports..... 15

Langelier Saturation Index Report (Livermore, DSRSD, LAVWMA) 18

Executive Summary

For the third quarter in fiscal year 2026 (Q3 FY 2026), the Livermore-Amador Valley Water Management Agency (LAVWMA) export conveyance system experienced no major outages or disruptions while pumping 1,451 million gallons (MG) of fully treated secondary effluent to the San Francisco Bay via the East Bay Dischargers Authority (EBDA) outfall diffuser and San Leandro Sample Station (SLSS; Table 6 or section Export Flow for more details).

This quarter the overall efficiency of the pumping system averaged 72.4% (Table 1; quarterly range FYs 2024 & 2025 [n=8]: 72.6% to 75.3%), with an average electrical cost of \$354 per MG, or \$115 per acre-foot (AF; Table 1 or section Electrical Usage, Efficiency, & Cost for more details). Preventative maintenance (PM) work orders outnumbered corrective maintenance (CM) work orders 10.5 to 1 (quarterly range FYs 2024 & 2025 [n=8]: 13.87 to 32.29; section Maintenance for more details).

For convenience, some year-to-date (YTD) values compared to budgeted are shown below (section Expenditures & Budget Utilization: Labor & O&M for more details).

- Overall costs: YTD \$2,512,477 Budget \$3,600,735
- Utilities costs: YTD \$1,414,645; Budget \$2,025,350
- Labor costs: YTD \$994,767; Budget \$1,249,300
- Labor hours: YTD 4,377.5; Budget 5,480
- WOs last quarter: 184.75 hours 183 PMs and 68.5 hours 11 CMs
- WOs this quarter: 151.5 hours 168 PMs and 48.5 hours 16 CMs
- Pump Efficiency: Jan-72.6% | Feb-72.0% | Mar-72.0%

Current Quarter Metrics

Monthly export flows were consistent with normal operations (Figure 1). Pump efficiency ranged from about 72% to 73%.

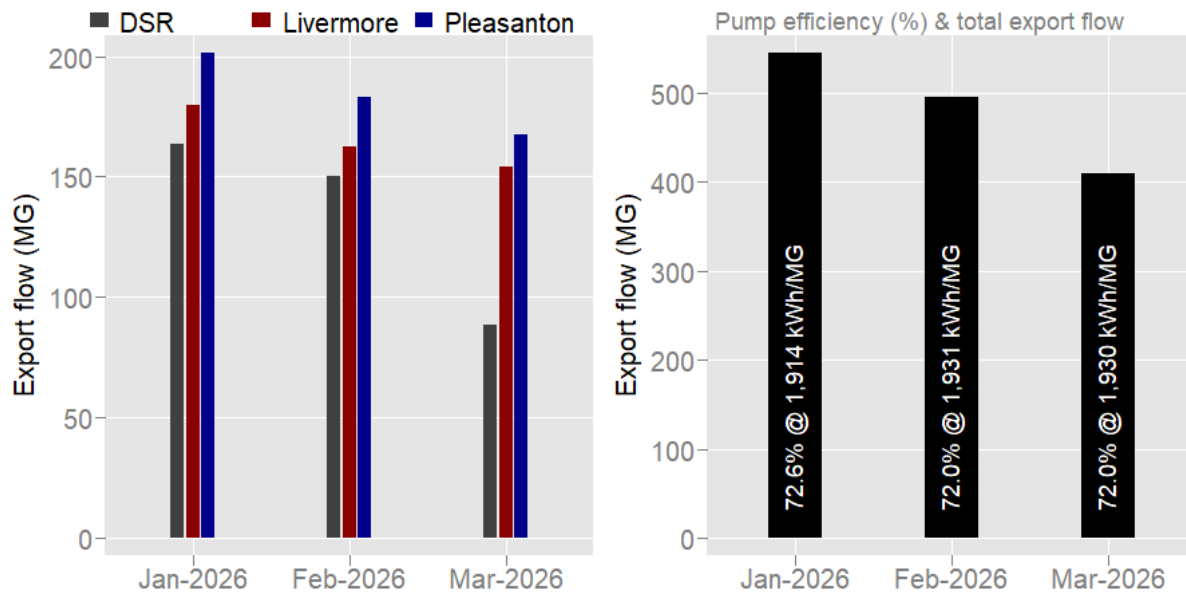


Figure 1 - LAVAQMA Q3 FY 2026 export flows for Jan-2026, Feb-2026, & Mar-2026; monthly flows shown by source (left plot) and as total (right plot) with pump efficiency (%) at noted kilowatt hour (kWh) per million gallons (MG); NOTE: flow & pump efficiency data displayed by calendar month, not PG&E billing period

Most power usage (as kWh) for feeders A & B was during off-peak hours (Figure 2).

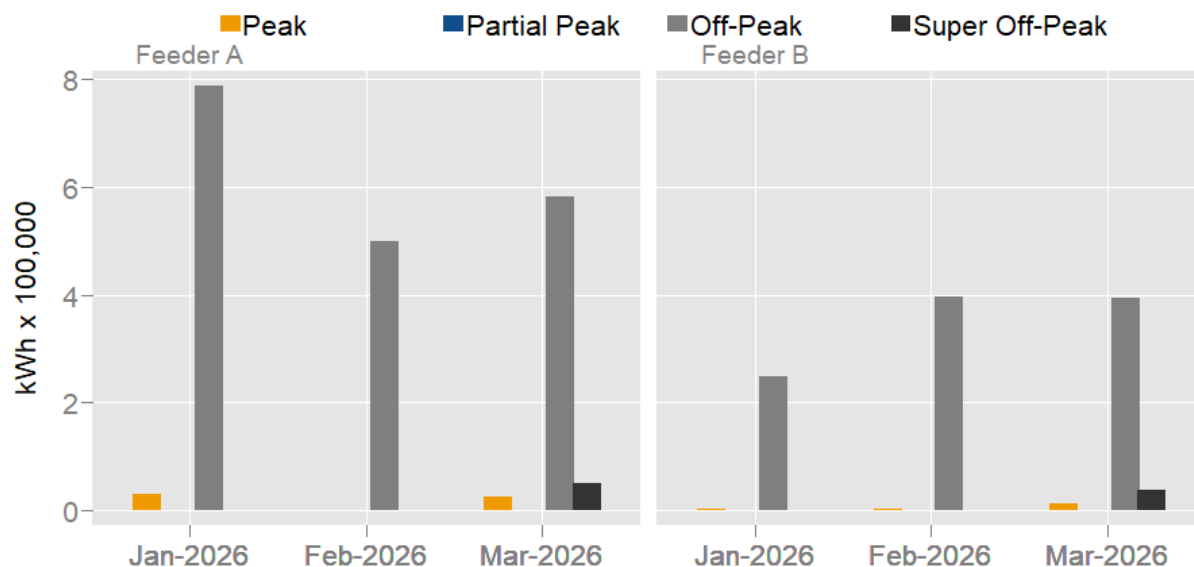


Figure 2 - LAVAQMA Q3 FY 2026 electric usage as kilowatt hour (kWh) for PG&E billing cycles Jan-2026, Feb-2026, & Mar-2026; billing cycle usage displayed separately for feeder A (left) & feeder B (right) by time of use: peak, partial peak, off-peak; & super off-peak

Labor and utilities covered the largest fraction of overall cost in Q3 FY 2026 (Figure 3, 3 left-most plots). There were no expenses for non-routine work this quarter.

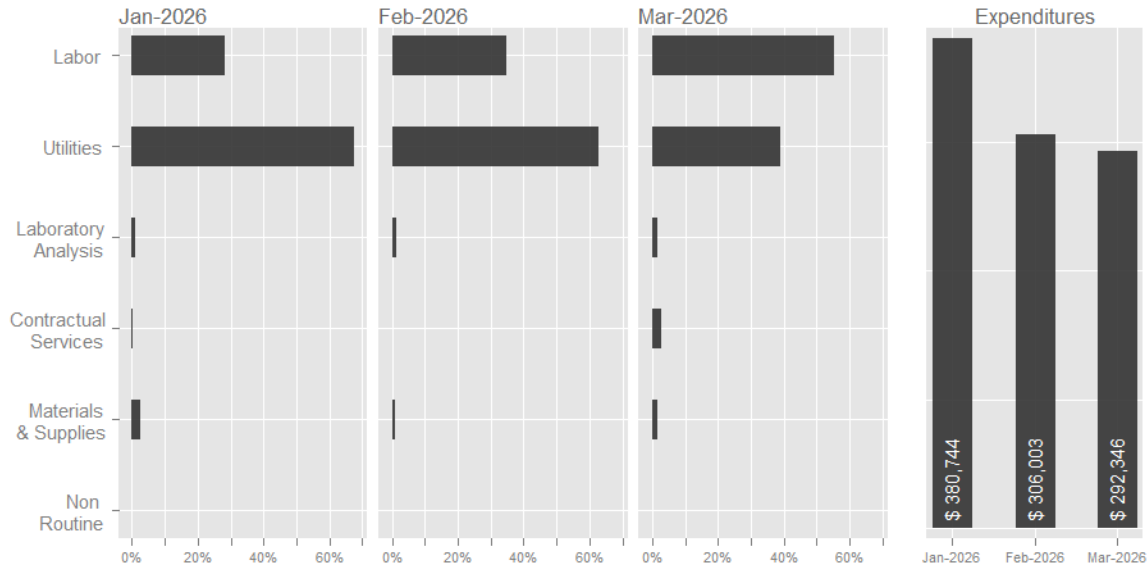


Figure 3 - LAVWMA Q3 FY 2026 expenditures for Jan-2026, Feb-2026, & Mar-2026 as percent of total cost by type (labor, utilizes, laboratory analysis, contractual services, materials & supplies, & non routine; left plot) and as monthly total (right plot)

There were no major equipment failures in Q3 FY 2026, the pipeline and pumping plant ran without issue. Preventative maintenance (PM) work orders exceeded corrective maintenance (CM) work orders each month during Q3 FY 2026 (Figure 4, right plot).

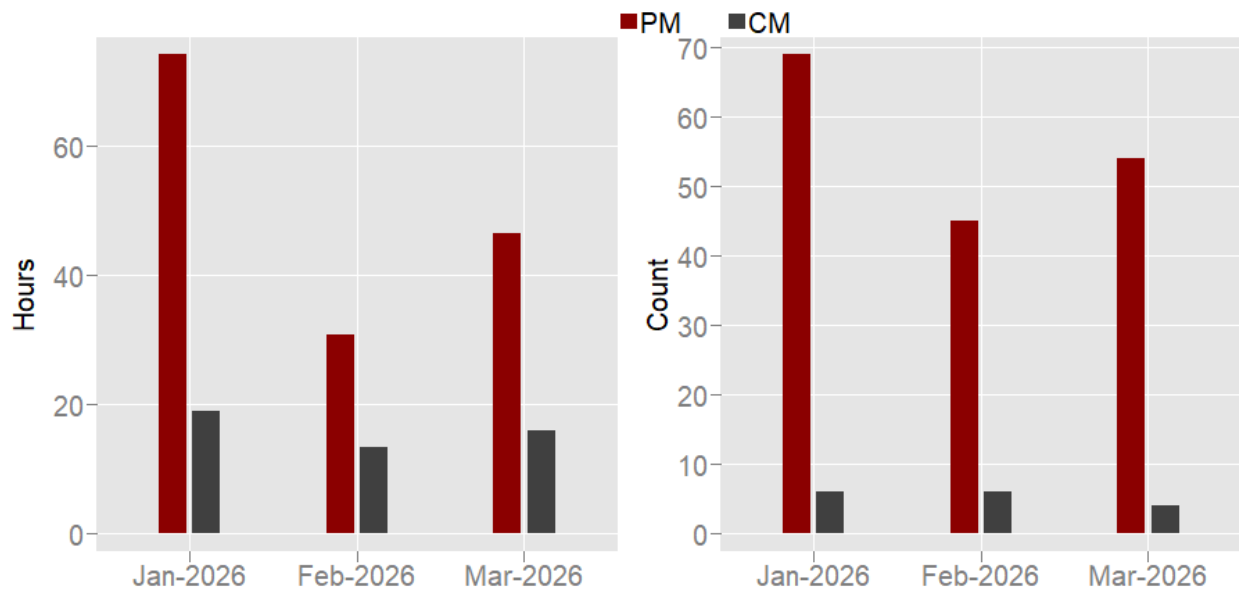


Figure 4 - LAVWMA Q3 FY 2026 preventative maintenance (PM) & corrective maintenance (CM) work order hours (left plot) and count (right plot) for Jan-2026, Feb-2026, & Mar-2026

Operations

Of the ~1,451 MG of effluent conveyed through the LAVWMA system during this quarter, 402 MG (27.7%) came from Dublin San Ramon (DSR), 497 MG (34.3%) from the City of Livermore, and 552 MG (38.0%) from the City of Pleasanton. Refer to section Export Flow for more details.

PG&E's current rate plan has four time-of-use (TOU) periods (in order of decreasing rates): peak (year-round), partial peak (June-September), off-peak (year-round), and super off-peak (March-May). Whenever possible, staff implement an efficient pumping plan to avoid pumping during higher rate periods (i.e., peak and partial peak).

Over the past quarter, DSRSD staff utilized the LAVWMA holding basin capacity to reduce the number of pumps in operation, thereby maximizing electrical savings. Flows into LAVWMA vary throughout the day and increase during rain events.

Maintenance

During the quarter, staff logged 151.5 hours completing 168 preventative maintenance (PM) work orders and 48.5 hours completing 16 corrective maintenance (CM) work orders on LAVWMA equipment and systems. Refer to Figure 4 for monthly breakdown (work order data updated 20-Apr-2026).

Pump 7 remains out of service due to a faulty coupling, which connects the motor and pump. A replacement coupling has been ordered and has not arrived yet. Pump 4 returned to service on 25-Mar-2026 and is running with no issues.

The following are some additional noteworthy maintenance activities during the quarter:

Electrical

- Set, connected, and energized Pump Motor #4
- Coordinated with PG&E on meter panel for Rectifier P3 at Lewelling
- Investigated communication conduits between junction structure and pump station
- Troubleshoot issues with south gate at LAVWMA

Instrumentation & Controls

- Replaced Livermore chlorine sensor at Junction Structure
- Troubleshoot and replaced failed modem at Rectifier P3
- Replaced Basin 1 and Basin 2 wet well dewatering pump float switches
- Replaced broken valve on combined chlorine and pH analyzer
- Supported NPDES inspection

Mechanical

- Installed LAVWMA pump 4 unit; running with no irregularities
- Continued to monitor Greenview ARV for consistent operation
- Coated Greenview Air Release Valve (ARV) lid (2-Apr-2026); repair work ongoing

Operations

- Wet weather event (17-Feb-2026): added a 6th pump and ran 5 pumps through peak; no bypasses initiated during storm event

- Responded to Air Release Valve (ARV) leak on East Castro Valley Blvd.; estimated 15–20 gallons of treated effluent were released; discharge did not reach a Water of the United States; RWQCB was notified
- Returned Pump No.4 to service 25-Mar-2026

Laboratory

- Normal business operations

Electrical Usage, Efficiency, & Cost

Monthly pump efficiency (O_e) was estimated as the fraction of a calculated kWh/MG given full efficiency (i.e., 100%) to the actual kWh/MG (see equations below).

$$O_e = \frac{\text{full efficiency kWh}}{\text{actual kWh}} \times 100$$

$$\text{Full Efficiency kWh} = \frac{\overline{GPM} \times TDH}{3960} \times 0.746 \times d \times 24h$$

where

- $\overline{GPM} = \frac{\text{Export Flow (MG)} \times 10^6}{d \times 1440 \text{ min/d}}$
- TDH (total dynamic head) = 442.8 ft (static lift = 408.8 ft, piping losses = 34 ft)
- 3960 = units conversion constant for water between 40° F and 220° F
- 0.746 = horsepower to kW conversion constant (0.746 hp / kW)
- d = number of days
- h = indicates hour (as 24 hours/day)

Table 1 - LAVWMA FY 2026 quarterly kWh usage, export flow, pump efficiency, & cost for PG&E-based billing cycle; current quarter & year-to-date (YTD) summaries provided below monthly values

	Billing		Flow		Pump				
	Days	kWh	(MG)	kWh/MG	Efficiency	Cost (\$)	\$/kWh	\$/MG	\$/AF
Q1									
Jul-2025	33	345,610	175	1,972.36	70.5%	\$118,807	\$0.34	\$678	\$221
Aug-2025	29	321,405	165	1,948.91	71.3%	\$110,252	\$0.34	\$669	\$218
Sep-2025	30	384,737	198	1,945.93	71.4%	\$72,144	\$0.19	\$365	\$119
Q2									
Oct-2025	32	640,706	345	1,858.79	74.8%	\$195,364	\$0.30	\$567	\$185
Nov-2025	30	752,596	407	1,847.00	75.3%	\$156,774	\$0.21	\$385	\$125
Dec-2025	30	902,415	472	1,913.17	72.7%	\$192,022	\$0.21	\$407	\$133
Q3									
Jan-2026	32	1,069,377	564	1,897.10	73.3%	\$255,881	\$0.24	\$454	\$148
Feb-2026	30	897,138	465	1,928.44	72.1%	\$191,351	\$0.21	\$411	\$134
Mar-2026	32	1,096,552	567	1,934.23	71.9%	\$112,312	\$0.10	\$198	\$65
Q3									
Average		1,021,023	532	1,920	72.4%	\$186,515	\$0.18	\$354	\$115
Total	94	3,063,068	1,596	5,760		\$559,544			
Minimum		897,138	465	1,897	71.9%	\$112,312	\$0.10	\$198	\$65
Maximum		1,096,552	567	1,934	73.3%	\$255,881	\$0.24	\$454	\$148
YTD									
Average		712,282	373	1,916	72.6%	\$156,101	\$0.24	\$459	\$150
Total	278	6,410,537	3,358	17,246		\$1,404,907			
Minimum		321,405	165	1,847	70.5%	\$72,144	\$0.10	\$198	\$65
Maximum		1,096,552	567	1,972	75.3%	\$255,881	\$0.34	\$678	\$221

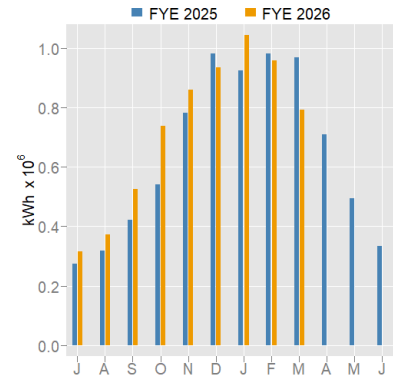


Figure 5 - LAVWMA monthly kWh usage FY 2025 & FY 2026 through Mar-2026; note: plotted kWh values by calendar month, not PG&E based billing cycle

Table 2 - LAVWMA FY 2026 quarterly kWh usage and cost for PG&E-based billing cycle separately for Service A & Service B

	Service A				Cost (\$)	Service B				Cost (\$)
	Peak (kWh)	Partial Peak (kWh)	Off-Peak (kWh)	Super Off-Peak (kWh)		Peak (kWh)	Partial Peak (kWh)	Off-Peak (kWh)	Super Off-Peak (kWh)	
Q1										
Jul-2025	0	0	0	0	\$3,822	2,105	1,928	341,577	0	\$114,985
Aug-2025	0	7,127	59,482	0	\$30,986	1,962	10,724	242,110	0	\$79,267
Sep-2025	0	1,290	108,787	0	\$34,095	2,119	16,103	256,439	0	\$38,049
Q2										
Oct-2025	7,508	17,344	603,852	0	\$143,769	2,216	1,146	8,641	0	\$51,595
Nov-2025	1,874	0	740,506	0	\$151,466	2,068	0	8,148	0	\$5,308
Dec-2025	0	0	672,276	0	\$142,328	2,958	0	227,181	0	\$49,694
Q3										
Jan-2026	29,541	0	788,761	0	\$193,254	3,194	0	247,881	0	\$62,626
Feb-2026	0	0	499,368	0	\$104,099	2,487	0	395,284	0	\$87,253
Mar-2026	23,447	0	581,972	48,605	\$20,183	11,258	0	394,631	37,381	\$92,129
Q3										
Average	17,663	0	623,367	16,202	\$105,845	5,646	0	345,932	12,460	\$80,669
Total	52,988	0	1,870,101	48,605	\$317,536	16,938	0	1,037,797	37,381	\$242,007
Minimum	0	0	499,368	0	\$20,183	2,487	0	247,881	0	\$62,626
Maximum	29,541	0	788,761	48,605	\$193,254	11,258	0	395,284	37,381	\$92,129
YTD										
Average	6,930	2,862	450,556	5,401	\$91,556	3,374	3,322	235,766	4,153	\$64,545
Total	62,370	25,761	4,055,003	48,605	\$824,001	30,365	29,900	2,121,892	37,381	\$580,906
Minimum	0	0	0	0	\$3,822	1,962	0	8,148	0	\$5,308
Maximum	29,541	17,344	788,761	48,605	\$193,254	11,258	16,103	395,284	37,381	\$114,985

Pump Run Time

Monthly pump utilization (U_m) was calculated as the fraction of total pump hours given the total hours possible if nine¹ pumps ran continuously (i.e., 24 hours per day; equation below, where h = total hours, m = given month, d = days in month). Pump utilization remained between ~29% and 39% in Q3 (Table 4).

$$U_m = \frac{h_m}{9 \times 24 \times d_m} \times 100$$

Table 3 - LAVWMA FY 2026 monthly pump hours by pump and total; quarterly and YTD summaries provided below monthly values

Hours	Pump 1	Pump 2	Pump 3	Pump 4	Pump 5	Pump 6	Pump 7	Pump 8	Pump 9	Pump 10	Total
Q1											
Jul-2025	71	334	0	0	0	0	1	0	291	0	697
Aug-2025	178	292	58	0	61	0	0	0	283	0	872
Sep-2025	257	117	215	0	354	3	0	84	106	220	1,356
Q2											
Oct-2025	478	0	417	0	416	0	0	479	0	192	1,982
Nov-2025	505	0	411	0	488	0	0	513	323	0	2,240
Dec-2025	452	81	453	0	475	56	0	166	394	313	2,391
Q3											
Jan-2026	104	503	523	0	549	109	0	557	273	0	2,619
Feb-2026	0	447	460	0	438	181	0	411	434	0	2,373
Mar-2026	321	289	55	101	160	202	0	131	428	256	1,944
	Pump 1	Pump 2	Pump 3	Pump 4	Pump 5	Pump 6	Pump 7	Pump 8	Pump 9	Pump 10	Total
Q1											
Average Hours	169	248	91	0	138	1	0	28	227	73	975
Std Dev Hours	92.9	115.0	111.2	0.0	189.5	1.7	0.4	48.5	104.6	127.2	341.3
Hours	506	743	273	0	415	3	1	84	680	220	2,925
Min Hours	71	117	0	0	0	0	0	0	106	0	697
Max Hours	257	334	215	0	354	3	1	84	291	220	1,356
Q2											
Average Hours	479	27	427	0	460	19	0	386	239	168	2,204
Std Dev Hours	26.6	46.7	22.9	0.0	38.2	32.6	0.0	191.5	210.0	157.7	206.6
Hours	1,436	81	1,281	0	1,379	56	0	1,158	717	505	6,612
Min Hours	452	0	411	0	416	0	0	166	0	0	1,982
Max Hours	505	81	453	0	488	56	0	513	394	313	2,391
Q3											
Average Hours	141	412.9	346	34	382	164.4	0	366.7	378	85.5	2,312
Std Dev Hours	163.6	110.7	254.2	58.2	200.3	48.7	0.0	216.6	91.2	148.1	341.6
Hours	424	1,238.8	1,039	101	1,147	493	0	1,100	1,135	256	6,935
Min Hours	0	289	55	0	160	109	0	131	273	0	1,944
Max Hours	321	502.8	523	101	549	202	0	557	434	256	2,619
Total Average Hours	263	229	288	11	327	61	0	260	281	109	1,830
Total Std Dev Hours	188.0	187.2	206.0	33.6	201.2	83.0	0.2	227.8	145.5	133.2	694.7
Total Hours	2,366	2,062.6	2,593	101	2,941	552	1	2,342	2,532	982	16,472
Total Min Hours	0	0	0	0	0	0	0	0	0	0	697
Total Max Hours	505	502.8	523	101	549	202	1	557	434	313	2,619

Table 4 - LAVWMA FY 2026 monthly percent pump utilization; quarterly and YTD summaries provided below monthly values

	Pump Utilization
Q1	
Jul-2025	10.4%
Aug-2025	13.0%
Sep-2025	20.9%
Q2	
Oct-2025	29.6%
Nov-2025	34.6%
Dec-2025	35.7%
Q3	
Jan-2026	39.1%
Feb-2026	39.2%
Mar-2026	29.0%
Q1	
Average Pump Utilization	14.8%
Min Pump Utilization	10.4%
Max Pump Utilization	20.9%
Q2	
Average Pump Utilization	33.3%
Min Pump Utilization	29.6%
Max Pump Utilization	35.7%
Q3	
Average Pump Utilization	35.8%
Min Pump Utilization	29.0%
Max Pump Utilization	39.2%
Total Average Pump Utilization	28.0%
Total Min Pump Utilization	10.4%
Total Max Pump Utilization	39.2%

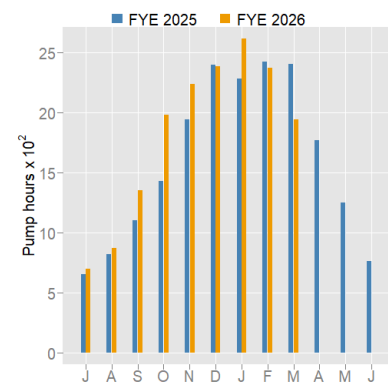


Figure 6- LAVWMA FY 2025 & FY 2026 monthly total pump hours through Mar-2026

¹ Ten pumps total, but one in reserve as a back-up to the other nine

Basin Levels

Table 5 - LAVWMA FY 2026 monthly average levels (in feet) by basin and overall (total); current quarter and YTD summaries provided below monthly values

Average				
	Basin 1	Basin 2	Basin 3	Total
Q1				
Jul-2025	2.54	0.73	3.66	2.31
Aug-2025	4.80	0.18	5.90	3.63
Sep-2025	4.77	1.02	5.38	3.72
Q2				
Oct-2025	3.60	2.37	4.07	3.35
Nov-2025	4.19	2.02	3.62	3.28
Dec-2025	3.66	0.26	3.24	2.38
Q3				
Jan-2026	3.04	0.24	5.95	3.07
Feb-2026	3.03	0.34	4.81	2.72
Mar-2026	2.49	0.20	2.63	1.77
Q3				
Average	2.85	0.26	4.46	2.52
Minimum	2.49	0.20	2.63	1.77
Maximum	3.04	0.34	5.95	3.07
YTD				
Average	3.57	0.82	4.36	2.92
Minimum	2.49	0.18	2.63	1.77
Maximum	4.80	2.37	5.95	3.72

Export Flow

Combined export flow includes Dublin San Ramon, the City of Livermore, and the City of Pleasanton. Monthly totals do not include flows diverted for recycling use by DERWA and Pleasanton. Budgeted FY 2026 flow is 4,520 MG at an estimated cost of \$797/MG.

Table 6 - LAVWMA FY 2026 monthly export flows in million gallons (MG) for Dublin San Ramon, Livermore, & Pleasanton; current quarter and YTD summaries provided below monthly values; note totals (quarterly & YTD) provided in with monthly summary

	Dublin San Ramon (MG)	Livermore (MG)	Pleasanton (MG)	Combined Export (MG)
Q1	0.00	371.96	259.49	631.45
Jul-2025	0.00	102.33	57.51	159.84
Aug-2025	0.00	111.79	79.96	191.75
Sep-2025	0.00	157.84	122.03	279.87
Q2	366.40	475.79	503.49	1,345.69
Oct-2025	99.46	145.08	154.77	399.31
Nov-2025	124.33	161.90	169.90	456.13
Dec-2025	142.62	168.81	178.82	490.25
Q3	402.33	496.49	552.08	1,450.91
Jan-2026	163.78	179.85	201.45	545.08
Feb-2026	150.09	162.60	183.27	495.95
Mar-2026	88.47	154.04	167.36	409.87
Total	768.74	1,344.24	1,315.07	3,428.05
Q3				
Average	134.11	165.50	184.03	483.64
Minimum	88.47	154.04	167.36	409.87
Maximum	163.78	179.85	201.45	545.08
YTD				
Average	85.42	149.36	146.12	380.89
Minimum	0.00	102.33	57.51	159.84
Maximum	163.78	179.85	201.45	545.08

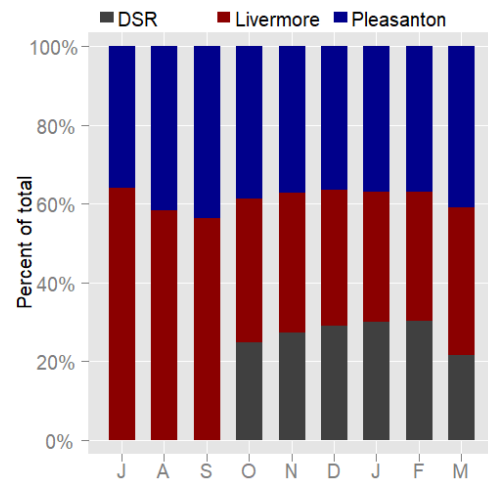


Figure 7- LAVWMA FY 2026 through Mar-2026 monthly export flows by region as a percent of total; DSR = Dublin San Ramon

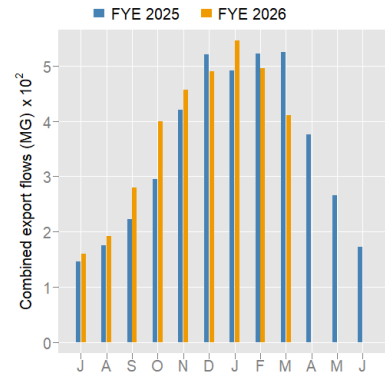


Figure 8 - LAVWMA FY 2025 & FY 2026 through Mar-2026 monthly combined export flows (MG)

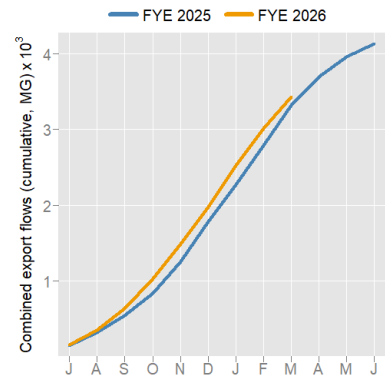


Figure 9 - LAVWMA FY 2025 & FY 2026 through Mar-2026 monthly cumulative combined export flows (MG)

Expenditures & Budget Utilization: Labor & O&M

Expenses this quarter included Foreseer maintenance, gate repair, and a 100 hp washdown pump.

Table 7 - LAVWMA FY 2026 monthly expenditure for labor, accounts payable (A/P), and overall (O&M); cost per export flow (million gallons [MG] and acre-foot [AF]) provided for reference; quarterly and YTD summaries provided below monthly values; note totals (quarterly & YTD) provided in with monthly summary

	Labor Expenses	A/P Expenses	O&M Expenses	\$/MG	\$/AF
Q1	\$348,034	\$330,304	\$678,338	\$1,074	\$350
Jul-2025	\$105,587	\$131,282	\$236,868	\$1,482	\$483
Aug-2025	\$137,544	\$119,487	\$257,030	\$1,340	\$437
Sep-2025	\$104,903	\$79,536	\$184,439	\$659	\$215
Q2	\$270,067	\$584,979	\$855,046	\$635	\$207
Oct-2025	\$92,748	\$210,781	\$303,529	\$760	\$248
Nov-2025	\$97,745	\$165,357	\$263,102	\$577	\$188
Dec-2025	\$79,574	\$208,841	\$288,414	\$588	\$192
Q3	\$376,666	\$602,427	\$979,093	\$675	\$220
Jan-2026	\$108,236	\$272,509	\$380,744	\$699	\$228
Feb-2026	\$106,775	\$199,228	\$306,003	\$617	\$201
Mar-2026	\$161,655	\$130,691	\$292,346	\$713	\$232
Total	\$994,767	\$1,517,710	\$2,512,477	\$733	\$239
Q3					
Average	\$125,555	\$200,809	\$326,364	\$676	\$220
Minimum	\$106,775	\$130,691	\$292,346	\$617	\$201
Maximum	\$161,655	\$272,509	\$380,744	\$713	\$232
YTD					
Average	\$110,530	\$168,634	\$279,164	\$826	\$269
Minimum	\$79,574	\$79,536	\$184,439	\$577	\$188
Maximum	\$161,655	\$272,509	\$380,744	\$1,482	\$483

Table 8 - LAVWMA FY 2026 YTD expenditures (O&M & labor) with percent budget utilized and budget remaining

	O&M YTD Expenses	O&M Budget Utilization	O&M Budget Remaining	Labor YTD Expenses	Labor Budget Utilization	Labor Budget Remaining
Q1						
Jul-2025	\$236,868	6.6%	\$3,363,867	\$105,587	8.5%	\$1,143,713
Aug-2025	\$493,899	13.7%	\$3,106,836	\$243,131	19.5%	\$1,006,169
Sep-2025	\$678,338	18.8%	\$2,922,397	\$348,034	27.9%	\$901,266
Q2						
Oct-2025	\$981,867	27.3%	\$2,618,868	\$440,782	35.3%	\$808,518
Nov-2025	\$1,244,969	34.6%	\$2,355,766	\$538,527	43.1%	\$710,773
Dec-2025	\$1,533,383	42.6%	\$2,067,352	\$618,101	49.5%	\$631,199
Q3						
Jan-2026	\$1,914,128	53.2%	\$1,686,607	\$726,336	58.1%	\$522,964
Feb-2026	\$2,220,131	61.7%	\$1,380,604	\$833,111	66.7%	\$416,189
Mar-2026	\$2,512,477	69.8%	\$1,088,258	\$994,767	79.6%	\$254,533

Table 9 - LAVWMA FY 2026 billed labor hours and full-time employment equivalent; quarterly and YTD summaries provided below monthly values; note billed labor hour totals (quarterly & YTD) provided with monthly summary

	Billed Labor Hours	FTE Equivalent
Q1	1,526.3	
Jul-2025	465.5	2.7
Aug-2025	607.8	3.5
Sep-2025	453.0	2.6
Q2	1,195.3	
Oct-2025	409.5	2.4
Nov-2025	433.0	2.5
Dec-2025	352.8	2.0
Q3	1,656.0	
Jan-2026	479.5	2.8
Feb-2026	476.5	2.7
Mar-2026	700.0	4.0
Total	4,377.5	
Q3		
Average	552.0	3.2
Minimum	476.5	2.7
Maximum	700.0	4.0
YTD		
Average	486.4	2.8
Minimum	352.8	2.0
Maximum	700.0	4.0

Expenditures: Livermore Sole Use Facilities

Table 10 - LAVWMA FY 2026 expenditures (labor & accounts payable [A/P]) for Livermore sole use facilities; quarterly and YTD (Total) summaries provided below monthly values

Expenses			
	Labor	A/P	Total
Q1			
Jul-2025	\$410	\$1,556	\$1,966
Aug-2025	\$0	\$670	\$670
Sep-2025	\$0	\$756	\$756
Q2			
Oct-2025	\$0	\$0	\$0
Nov-2025	\$0	\$588	\$588
Dec-2025	\$0	\$816	\$816
Q3			
Jan-2026	\$1,640	\$749	\$2,389
Feb-2026	\$820	\$761	\$1,581
Mar-2026	\$0	\$792	\$792
	Labor	A/P	Total
Q1			
Total	\$410	\$2,982	\$3,392
Average	\$137	\$994	\$1,131
Minimum	\$0	\$670	\$670
Maximum	\$410	\$1,556	\$1,966
Q2			
Total	\$0	\$1,405	\$1,405
Average	\$0	\$468	\$468
Minimum	\$0	\$0	\$0
Maximum	\$0	\$816	\$816
Q3			
Total	\$2,460	\$2,301	\$4,762
Average	\$820	\$767	\$1,587
Minimum	\$0	\$749	\$792
Maximum	\$1,640	\$792	\$2,389
Total Total	\$2,871	\$6,688	\$9,559
Total Average	\$319	\$743	\$1,062
Total Minimum	\$0	\$0	\$0
Total Maximum	\$1,640	\$1,556	\$2,389

Detailed YTD O&M Budget Comparison to Actual Expenses

LAVWMA BUDGET COMPARISON TO ACTUAL EXPENSES: GOODS & SERVICES																Current FY Period: 9	
ACTUAL EXPENSES BILLED TO LAVWMA FOR REGULAR O&M																	
	Budget	July	August	September	October	November	December	January	February	March	April	May	June	YTD	YTD		
	FY 2025-2026	2025	2025	2025	2025	2025	2025	2026	2026	2026	2026	2026	2026	TOTAL	Budget		
Project Total:	Labor																
lavcost		\$1,249,300	\$105,587	\$137,544	\$104,903	\$92,748	\$97,745	\$79,574	\$108,236	\$106,775	\$161,655			\$994,767	\$936,975		
LAVWMA	Subtotal	\$1,249,300	\$105,587	\$137,544	\$104,903	\$92,748	\$97,745	\$79,574	\$108,236	\$106,775	\$161,655	\$0	\$0	\$0	\$994,767	\$936,975	
Phase Total:	Materials & Supplies																
supply	Operations Supplies	\$24,100	130	\$466	\$671	\$156	\$3,027	\$258	\$79	\$352	\$216			\$5,354	\$18,075		
	Mechanical Supplies	\$35,250	\$1,080	\$1,859	\$17		\$303	\$129	\$1,044	\$371	\$248			\$5,052	\$26,438		
	Electrical Supplies	\$40,000	\$0	\$0	\$0	\$10,429		\$9,211	\$8,959	\$1,670	\$4,327			\$34,596	\$30,000		
	Subtotal	\$99,350	\$1,210	\$2,325	\$689	\$10,585	\$3,330	\$9,598	\$10,082	\$2,392	\$4,791	\$0	\$0	\$0	\$45,001	\$74,513	
Analysis	Laboratory Analysis																
Biochemical Oxy	Compliance Testing	\$12,000	\$1,465	\$1,172	\$1,172	\$1,465	\$1,172	\$1,465	\$1,200	\$1,200	\$1,200				\$9,000		
Demand & Total	Operational Support Testing	\$5,050	\$321	\$0	\$0	\$642	\$0	\$0	\$658	\$0	\$0				\$3,788		
Langelier Index	Special Sampling	\$30,300	\$2,541	\$2,340	\$2,925	\$2,340	\$1,938	\$2,541	\$2,398	\$2,998	\$2,998				\$22,725		
	Subtotal	\$47,350	\$4,327	\$3,512	\$4,097	\$4,447	\$3,110	\$4,006	\$4,256	\$3,598	\$4,198	\$0	\$0	\$0	\$35,551	\$35,513	
Phase Total:	Contractual Services																
cservi	Sub-surface Repairs	\$16,225												\$0	\$12,169		
	Street Sweeping	\$5,150												\$0	\$3,863		
	Cathodic Protection Survey & Repairs	\$48,700												\$0	\$36,525		
	Underground Service Alert	\$5,200	\$626											\$626	\$3,900		
	SCADA software maintenance contract	\$15,000	\$5,365					\$158						\$5,523	\$11,250		
	Remote monitoring annual service for PS and Re	\$2,500						\$646						\$646	\$1,875		
	HVAC Maintenance/Repairs	\$1,200												\$0	\$900		
	Termite/Pest Control	\$1,100												\$0	\$825		
	Landscape/weed maintenance	\$11,550												\$0	\$8,663		
	Smartmeter Covers	\$1,860								\$2,184				\$1,395	\$1,395		
	Janitorial Service	\$11,700		\$1,950	\$975		\$975	\$975	\$975	\$975	\$3,200			\$10,025	\$8,775		
	Fire Extinguisher Maintenance	\$200												\$0	\$150		
	Misc Professional/Contractual Services	\$34,000		\$457		\$280		\$317			\$2,456			\$3,510	\$25,500		
	Subtotal	\$154,385	\$5,991	\$2,407	\$975	\$280	\$975	\$2,095	\$975	\$975	\$7,840	\$0	\$0	\$0	\$22,513	\$115,789	
Phase Total:	Utilities																
utilit	Electricity (PG&E)	\$2,019,250	\$119,608	\$110,922	\$72,900	\$195,364	\$157,362	\$192,838	\$256,629	\$192,112	\$113,104			\$1,410,840	\$1,514,438		
	Water & Sewer (Pleasanton)	\$2,500			\$202		\$202		\$196		\$380			\$980	\$1,875		
	Water (EBMUD)	\$1,600			\$483		\$228		\$219		\$228			\$1,158	\$1,200		
	Telephone/communications	\$2,000	\$146	\$321	\$190	\$104	\$151	\$303	\$152	\$151	\$151			\$1,668	\$1,500		
	WW Treatment (DSRSD)	\$0												\$0	\$0		
	Subtotal	\$2,025,350	\$119,754	\$111,243	\$73,775	\$195,469	\$157,942	\$193,141	\$257,196	\$192,263	\$113,862	\$0	\$0	\$0	\$1,414,645	\$1,519,013	
Phase Total:	Non-Routine																
nonrou		\$25,000												\$0	\$18,750		
	Subtotal	\$25,000	\$0	\$0	\$0	\$0	\$0	\$0	\$0	\$0	\$0	\$0	\$0	\$0	\$0		
	Monthly Total		\$236,868	\$257,030	\$184,439	\$303,529	\$263,102	\$288,414	\$380,744	\$306,003	\$292,346	\$0	\$0	\$0	\$2,512,477	\$2,700,551	
	YTD Total	\$3,600,735	\$236,868	\$493,899	\$678,338	\$981,867	\$1,244,969	\$1,533,383	\$1,914,128	\$2,220,131	\$2,512,477	\$2,512,477	\$2,512,477	\$2,512,477	\$2,512,477	\$2,700,551	
	Combined Export Flow, mg	4520	160	192	280	399	456	490	545	496	410				3,428	3,390	
	Pumping Efficiency		70.6%	71.5%	74.0%	75.1%	73.6%	72.8%	72.6%	72.0%	72.0%						
	Monthly Cost, \$/mg		\$1,482	\$1,340	\$659	\$760	\$577	\$588	\$699	\$617	\$713						
	YTD Running Cost, \$/mg	\$797	\$1,482	\$1,405	\$1,074	\$953	\$837	\$776	\$759	\$736	\$733				\$733		

LAVWMA

BUDGET COMPARISON TO ACTUAL EXPENSES: LABOR

Current FY Period: 9

ACTUAL EXPENSES BILLED TO LAVWMA FOR REGULAR O&M														
	Jul 2025	Aug 2025	Sep 2025	Oct 2025	Nov 2025	Dec 2025	Jan 2026	Feb 2026	Mar 2026	Apr 2026	May 2026	Jun 2026	YTD TOTAL	YTD Budget
<i>Estimated Personnel Hours</i>														
Division 51 - FOD	44	10.00	5.00	10.00	17.00	14.00	56.00	33.00						
Water/Wastewater Sys Lead Op	0												-	-
Water/Wastewater Sys OP IV-On Call	0												-	-
Water/Wastewater Sys OP IV	0								2.00				2.00	-
Water/Wastewater Sys OP III	0												-	-
Water/Wastewater Sys OP I/II	36	10.00	5.00	10.00	17.00	8.00							50.00	27.00
Maintenance Worker	0												-	-
Supervisor	8								4.00				4.00	6.00
Division 52 - WWTP	2,605	218.50	367.75	272.00	185.00	225.00	175.00	220.00	240.50	307.00	2,210.75	1,803.75		
Senior Process WWTP Operator	40	32.00	74.50	30.00	15.00	30.00	28.00	28.00	26.00	46.00			309.50	30.00
Senior WWTP Operator	1,950	61.00	80.75	51.00	49.50	49.00	35.50	44.00	52.50	151.00			574.25	1,462.50
WWTP Supervisor	200	10.00	17.00	39.00	18.00	20.00	9.00	14.00	10.00	10.00			147.00	-
Operator In Training	0												-	-
WWTP Operator II	415	115.50	194.50	151.00	102.50	126.00	102.50	134.00	152.00	100.00			1,178.00	311.25
WWTP Operator II (SLSS)	0												-	-
Operations Superintendent	0		1.00	1.00									2.00	-
Operations Director	0												-	-
Division 53 - MECH	1,580	188.00	159.00	129.00	154.00	148.50	135.75	202.50	131.50	199.50	1,447.75	1,185.00		
Senior Mechanic	500	68.00	51.00	52.00	49.00	22.50	30.25	43.00	31.50	67.00			414.25	375.00
Senior Mechanic - USA	0	17.00	10.00	23.00	9.00	16.00	16.00	13.50	16.00	54.00			174.50	-
Maintenance Worker II	40												-	30.00
Mechanic I	0	19.50	35.50	25.50	56.00	56.50	36.00	70.00	69.00	26.50			394.50	-
Mechanic II	1,000	17.00	33.00	8.00	21.00	27.50	16.00	41.00	6.00	25.00			194.50	750.00
Mechanic I-USA	0	57.50	21.50	5.50	19.00	15.00	18.50	22.00	9.00	16.00			184.00	-
Mechanic II-USA	0	9.00	8.00	15.00	11.00	19.00	13.00	11.00	11.00				86.00	-
Mechanical Supervisor	40												-	30.00
Mechanical Superintendent	0												-	-
Division 54 - ELEC	1,079	57.00	67.00	48.00	64.50	46.00	40.50	56.50	87.50	178.50	645.50	809.25		
Senior Instrument/Controls Tech	90	9.00	14.50	7.00	12.50	12.00	6.00	11.50	16.00	15.00			103.50	67.50
Instrumentation & Controls Tech I/II	504	19.00	24.00	21.00	20.00	18.00	29.50	33.00	22.50	36.00			223.00	378.00
Ice Supervisor	45	0.50	7.00	4.00	0.50	4.00	1.00	3.00	3.00	2.00			25.00	33.75
Senior Electrician	90	9.00	10.00	6.00	18.00			7.00	12.00	24.00			86.00	67.50
Electrician I/II	305	15.00	10.00	9.00	10.00	10	2.00	2.00	21.00	97.00			176.00	228.75
Principal Electrical Engineer	45	4.50	1.50	1.00	3.50	2.00	2.00		13.00	4.50			32.00	33.75
Division 55 - Laboratory	0	-	-	-	-	-	-	-	-	-	-	-	-	-
EC Inspector II-Pretreatment	0												-	-
Laboratory Technician	0												-	-
Supervisor	0												-	-
Division 26 - SAFETY	54	-	-	-	-	-	-	-	-	-	-	-	-	40.50
Safety Officer	54												-	40.50
Division 40 - ENG	118	2.00	4.00	4.00	1.00	3.50	1.50	0.50	1.00	17.50	81.00			
Senior Civil Engineer-SME	10												-	-
Associate Engineer	60	2.00	4.00	4.00	1.00	3.50	1.50	0.50					16.50	45.00
Construction Inspector I/II	8												-	6.00
Engineering Technician I	20								1.00				1.00	15.00
GIS Analyst	20												-	15.00
<i>Total Estimated Personnel Hours</i>	5,480													
<i>FTE</i>	2.6													
Total Monthly Hours	465.50	607.75	453.00	409.50	433.00	352.75	479.50	476.50	700.00	-	-	-	4,377.50	3,952.50

EBDA Monthly Reports

Parameter	Flow	CBOD Qual	CBOD	TSS Qual	TSS	pH	pH	Total Residual Chlorine	Total Residual Chlorine	Fecal Qual	Fecal Coliforms	Entero Qual	Enterococci	Total Kjeldahl Nitrogen	Total Inorganic Nitrogen	Total Inorganic Nitrogen	Flow	Flow	Total Residual Chlorine	
Units	MGD		mg/L		mg/L	SU	SU	mg/L	mg/L		MPN/100mL		MPN/100mL	mg/L	mg/L	mg/L	MGD	MGD	mg/L	
Test Method	Daily Average (Mean)		SM 5210 B-2011		SM 2540 D-2011	Instant Min	Instant Max	Daily Average (Mean)	Daily Average (Mean)		SM 9221 C, E-2006		Enterolert	SM 4500-N	Calculation: NO2 + NO3		Daily Ave	Daily Average	Field	
MDL			2.0		1.2															
RL			2.0		4.5						1.8		10							
Location	LAVWMA-EXP		LAVWMA-EXP		LAVWMA-EXP	LAVWMA-EXP	LAVWMA-EXP	LAVWMA-EXP	SLSS		SLSS		SLSS	INF-002F	EFF-002F	EFF-002F	INF-002F	EFF-002F	SLSS	
1/1/2026	18.67					7.00	7.25	2.29	0.000											
1/2/2026	21.17					7.05	7.15	2.11	0.000											
1/3/2026	17.78					7.10	7.22	1.89	0.001											
1/4/2026	21.19					7.09	7.22	1.68	0.002											
1/5/2026	22.43					7.10	7.19	1.79	0.000											
1/6/2026	22.37					7.15	7.23	2.36	0.000	<	1.8	<	10							0.10
1/7/2026	22.48		4.6		10.0	7.19	7.27	2.80	0.000											
1/8/2026	18.11					7.17	7.28	2.46	0.000					42						
1/9/2026	18.79					7.14	7.26	2.58	0.000						31					
1/10/2026	18.74					7.19	7.34	2.67	0.000											
1/11/2026	18.21					7.14	7.33	2.04	0.000											
1/12/2026	17.28					7.19	7.32	1.92	0.000											
1/13/2026	18.14					7.06	7.30	1.90	0.000		4	<	10							0.11
1/14/2026	17.26		3.7		5.3	7.09	7.22	2.07	0.000											
1/15/2026	17.24					7.22	7.51	2.11	0.000											
1/16/2026	17.61					7.43	7.53	2.24	0.000											
1/17/2026	17.45					7.41	7.52	2.33	0.000											
1/18/2026	14.98					7.43	7.58	2.34	0.000											
1/19/2026	16.69					7.41	7.52	2.47	0.000											
1/20/2026	18.49					7.39	7.49	2.39	0.000	<	1.8		20							0.10
1/21/2026	13.69		3.8		7.3	7.22	7.94	2.32	0.000											
1/22/2026	15.13					7.20	8.08	2.23	0.000											
1/23/2026	16.10					7.50	8.11	2.00	0.000											
1/24/2026	15.99					7.54	7.69	1.97	0.000											
1/25/2026	17.33					7.57	7.69	2.36	0.000											
1/26/2026	16.83					7.57	7.72	2.47	0.002											
1/27/2026	14.79					7.59	8.05	2.41	0.011		13	<	10							0.08
1/28/2026	15.53		4.3		9.2	7.59	7.71	2.49	0.024											
1/29/2026	16.10					7.58	7.71	2.90	0.099											
1/30/2026	14.45					7.57	7.71	4.68	0.400											
1/31/2026	14.09					7.58	7.75	4.81	0.694											

Note:
 Column G - pH Minimum; online
 Column H - pH Maximum; online

Parameter	Flow	CBOD Qual	CBOD	TSS Qual	TSS	pH	pH	Total Residual Chlorine	Total Residual Chlorine	Fecal Qual	Fecal Coliforms	Entero Qual	Enterococci	Total Kjeldahl Nitrogen	Total Inorganic Nitrogen	Total Inorganic Nitrogen	Flow	Flow	Total Residual Chlorine	
Units	MGD		mg/L		mg/L	SU	SU	mg/L	mg/L		MPN/100mL		MPN/100mL	mg/L	mg/L	mg/L	MGD	MGD	mg/L	
Test Method	Daily Average (Mean)		SM 5210 B-2011		SM 2540 D-2011	Instant Min	Instant Max	Daily Average (Mean)	Daily Average (Mean)		SM 9221 C,E-2006		Enterolert	SM 4500-h	Calculation: NO2 + NO3		Daily Ave	Daily Average	Field	
MDL			2.0		1.2															
RL			2.0		4.5						1.8		10							
Location	LAVWMA-EXP		LAVWMA-EXP		LAVWMA-EXP	LAVWMA-EXP	LAVWMA-EXP	LAVWMA-EXP	SLSS		SLSS		SLSS	INF-002F	EFF-002F	EFF-002F	INF-002F	EFF-002F	SLSS	
2/1/2026	16.24					7.57	7.72	4.75	0.788								11.83	11.40		
2/2/2026	17.07					7.59	7.71	4.26	0.725								11.70	9.23		
2/3/2026	12.21					7.60	7.73	3.63	0.407		7.8	<	10				11.26	7.82	0.09	
2/4/2026	14.17		4.5		10	7.60	7.77	3.16	0.480								11.20	11.03		
2/5/2026	16.41					7.62	7.75	3.33	0.932					60	39		11.08	10.95		
2/6/2026	14.23					7.66	7.79	3.12	0.191								11.24	9.34		
2/7/2026	13.89					7.60	7.79	2.13									11.31	10.96		
2/8/2026	16.49					7.59	7.73	2.07									11.54	10.96		
2/9/2026	13.22					7.62	7.79	2.17									11.69	5.28		
2/10/2026	9.21					7.63	7.79	2.41			4.5	<	10				10.62	6.53	0.05	
2/11/2026	14.21		3.7		9.0	7.60	7.75	2.74									11.45	11.24		
2/12/2026	15.12					7.57	7.71	3.32									11.28	10.74		
2/13/2026	16.10					7.60	7.84	3.51									11.17	10.80		
2/14/2026	15.79					7.60	7.73	3.51									11.16	11.01		
2/15/2026	16.58					7.59	7.73	4.75									11.39	11.15		
2/16/2026	19.30					7.55	7.73	4.63									15.91	15.10		
2/17/2026	26.08					7.56	7.65	3.26		<	1.8	<	10				21.72	21.64	0.12	
2/18/2026	28.70		5.3		11.0	7.52	7.64	3.45									18.93	20.00		
2/19/2026	24.91					7.58	7.98	4.58									18.47	19.07		
2/20/2026	22.00					7.62	7.70	5.79									15.59	16.54		
2/21/2026	21.20					7.57	7.75	4.27									14.66	15.40		
2/22/2026	23.80					7.63	7.77	3.47									14.22	15.20		
2/23/2026	17.88					7.55	7.71	3.42									13.64	13.91		
2/24/2026	18.07					7.57	7.71	3.93		<	1.8	<	10				13.20	12.87	0.09	
2/25/2026	18.02		3.5		7.2	7.53	7.66	3.32									13.47	13.62		
2/26/2026	19.93					7.55	7.65	3.82									13.49	13.78		
2/27/2026	19.11					7.52	7.66	3.47									13.32	11.00		
2/28/2026	16.02					7.47	7.66	3.24									13.05	11.44		

Note:
Column G - pH Minimum; online
Column H - pH Maximum; online

Parameter	Flow	CBOD Qual	CBOD	TSS Qual	TSS	pH	pH	Total Residual Chlorine	Total Residual Chlorine	Fecal Qual	Fecal Coliforms	Entero Qual	Enterococci	Total Kjeldahl Nitrogen	Total Inorganic Nitrogen	Total Inorganic Nitrogen	Flow	Flow	Total Residual Chlorine	
Units	MGD		mg/L		mg/L	SU	SU	mg/L	mg/L		MPN/100mL		MPN/100mL	mg/L	mg/L	mg/L	MGD	MGD	mg/L	
Test Method	Daily Average (Mean)		SM 5210 B-2011		SM 2540 D-2011	Instant Min	Instant Max	Daily Average (Mean)	Daily Average (Mean)		SM 9221 C,E-2006		Enterolert	SM 4500-h	Calculation: NO2 + NO3		Daily Ave	Daily Average	Field	
MDL			2.0		1.2															
RL			2.0		4.5						1.8		10							
Location	LAVWMA-EXP		LAVWMA-EXP		LAVWMA-EXP	LAVWMA-EXP	LAVWMA-EXP	LAVWMA-EXP	SLSS		SLSS		SLSS	INF-002F	EFF-002F	EFF-002F	INF-002F	EFF-002F	SLSS	
3/1/2026	18.03					7.49	7.63	2.77									13.11	13.28		
3/2/2026	16.55					7.49	7.65	2.36									12.44	9.99		
3/3/2026	16.18					7.53	7.62	3.22			7.8	<	10				11.73	12.85	0.01	
3/4/2026	18.28		5.6		8	7.52	7.61	4.20									11.77	12.63		
3/5/2026	17.64					7.29	7.85	4.11							39		11.87	12.04		
3/6/2026	15.00					7.48	7.63	3.65						53			12.09	8.97		
3/7/2026	14.20					7.43	7.62	2.96									11.98	12.05		
3/8/2026	15.80					7.43	7.58	2.79									11.82	11.45		
3/9/2026	15.76					7.44	7.58	2.86									12.37	9.13		
3/10/2026	13.76					7.48	7.63	3.30		<	1.8	<	10				12.03	8.25	0.06	
3/11/2026	13.70		3.6		6.7	7.46	7.63	3.64									11.57	10.81		
3/12/2026	15.69					7.41	7.57	4.04									11.38	11.19		
3/13/2026	11.75					7.46	7.63	3.96									11.78	5.99		
3/14/2026	12.28					7.42	7.60	4.11									11.58	10.46		
3/15/2026	13.70					7.44	7.56	4.00									12.40	6.87		
3/16/2026	14.40					7.39	7.56	4.17									12.00	9.62		
3/17/2026	10.72					7.28	7.70	3.93			2.0	<	10				12.08	3.56		
3/18/2026	7.37		4.2		6.3	7.41	7.60	4.10									12.08	5.44		
3/19/2026	10.59					7.26	7.57	4.27									11.99	6.77		
3/20/2026	10.67					7.42	7.90	4.23									12.11	4.01		
3/21/2026	11.40					7.42	7.57	4.33									11.84	11.67		
3/22/2026	13.01					7.47	7.65	3.81									12.48	4.55		
3/23/2026	11.22					7.42	7.62	3.98									12.12	8.26		
3/24/2026	10.08					7.42	7.63	3.78		<	1.8	<	10				11.88	4.46	0.04	
3/25/2026	11.58		4.1		9.0	7.42	7.58	3.63									11.81	6.64		
3/26/2026	12.39					7.41	7.56	3.97									11.56	9.26		
3/27/2026	10.29					7.39	7.60	4.18									11.77	4.25		
3/28/2026	10.69					7.34	7.55	2.52									11.84	9.82		
3/29/2026	13.83					7.36	7.51	2.95									12.31	7.06		
3/30/2026	10.60					7.44	7.98	2.89									11.90	4.81		
3/31/2026	12.74					7.46	8.27	3.39			2.0	<	10				11.36	11.10	0.05	

Note:
Column G - pH Minimum; online
Column H - pH Maximum; online

Langelier Saturation Index Report (Livermore, DSRSD, LAVWMA)

The Langelier Saturation index is used to predict corrosion potential on the export pipeline. Keeping a Langelier index between -0.5 – 0.5 is a good target.

Langelier pH Saturation Index (Jan-26 through Mar-26)

Agency	Collection Date	TDS (mg/L)	Temp (°C)	Ca Hardness (mg/L CaCO₃)	Alkalinity (mg/L CaCO₃)	pH Actual	pH Saturation	Langelier Index
Livermore	02/04/26	610	20.0	82	309	7.5	7.6	-0.1
DSRSD	02/10/26	650	18.8	170	295	7.34	7.2	0.1
LAVWMA	01/05/26	682	18.1	120	301	7.38	7.4	0.0